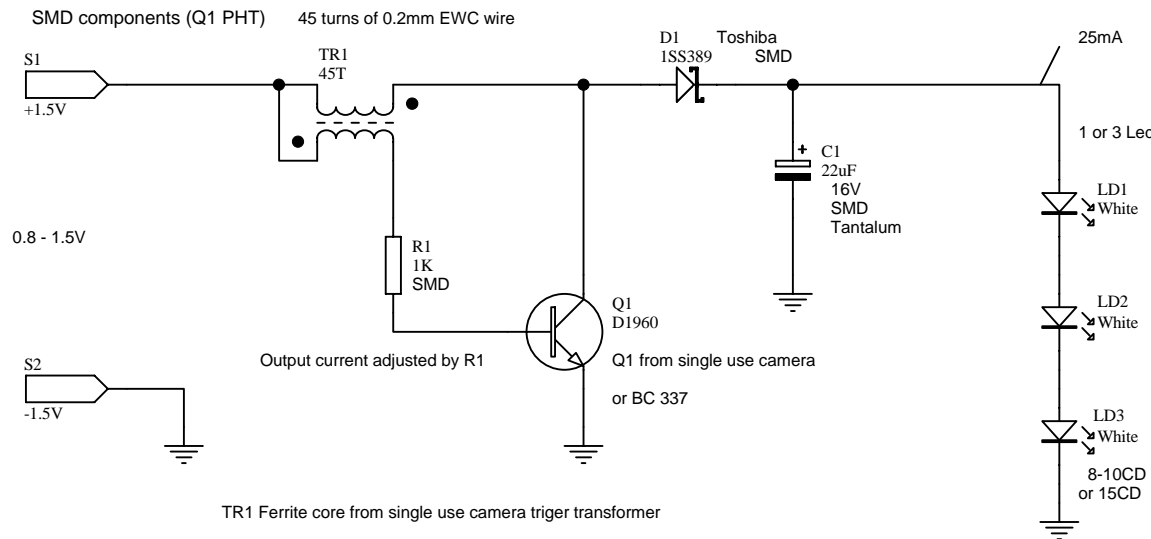


White LED torch driver for 1 & 3 x 5 mm Led's.



Note: Components from single camera can be used, transformer - trigger transformer after rewind, switching transistor. Components can be reclaimed from Computer Motherboards, Video cards, Hard disk drives - tantalum smd capacitors, diodes and ferrite RF rods.

25mA
1 or 3 Led's adjust R1 for current 25mA

TR1 Ferrite core from single use camera trigger transformer
 Ferrite core dia 2mm by 5.5mm
 Wire 45cm long for 45 turns of 0.2mm EWC wire

Tested Ferrite core from single use camera trigger transformer.
 2 x 45 turns 0.2mm ECW wire on ferrite 2mm x 6.2mm.
 3 - 4 layers __ wire long 45 cm Tested - Best for TR1

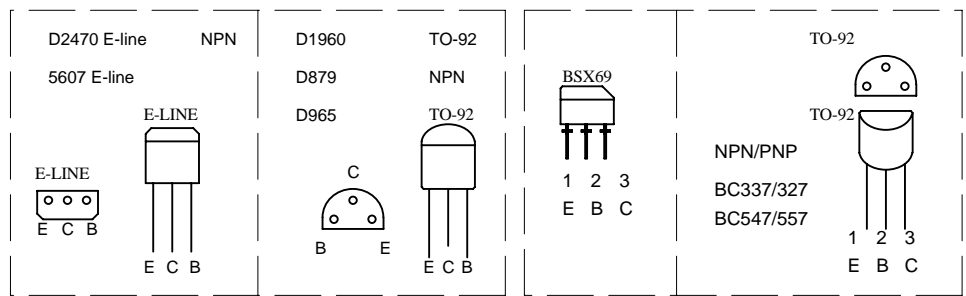
Tested Ferrite core from single use camera trigger transformer.
 2 x 35 turns 0.2mm ECW wire on ferrite 2mm x 4mm.
 3 - 4 layers __ wire long 35 cm Tested - Best for TR1

A1585 E-line PNP more information 2sb1424.pdf

D2321 E-line

C5471 TO-92

D965 more information 2SD965_28SJC00200BED_2D2518.pdf



Tested 23/2/2003 SMD components (Q1 PHT)

O.P. Solar www.otakarpriboj.com.au		
Title 1 & 3 LED _ AA & AAA torch		
Size A4	Number Email: otakarpriboj@otakarpriboj.com.au	Revision
Date : 26-Jun-2006	Sheet 1 of 1	Drawn By : Otakar Priboj
File : D:\I_CLIENT\PROJ\LED_T\LED_T_8A.SCH		